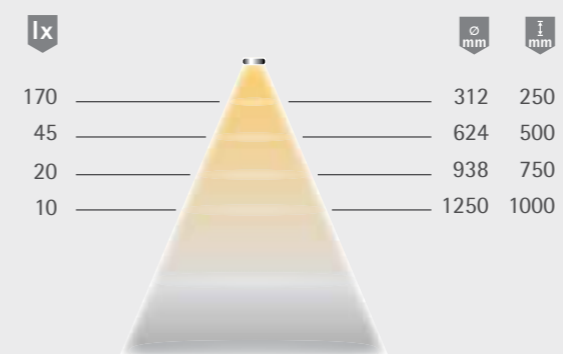




Light distribution diagram 60°



## Ice

### Advantages

- ▶ Can be retrofitted into furniture
- ▶ Light cone points upwards and downwards
- ▶ Achieve a big effect with little effort

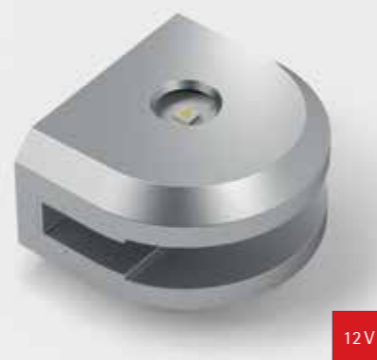
### Examples of use

- ▶ For mounting on a glass plate

### Features

- ▶ For use with 6- 8 mm glass shelves

## Technical details



**Luminaire type:** Surface-mounted light  
**Type of lighting:** Accent lighting  
**Surface finish:** Aluminium look  
**Operating voltage:** 12 V DC  
**Light colour:** WarmWhite  
**Colour rendering:** RA >90  
**Luminous flux luminaire:** 40 lm  
**Luminous flux luminaire:** 2 x 20 lm (bottom/top)  
**Life span:** 40,000 h (L70)  
**Power consumption:** 0.9 W  
**Dimmable:** Yes/PWM/Smart.home  
**Beam angle:** 90°  
**Half value angle:** 60°  
**Test marks and symbols:** CE, RoHS, Energy Star, ENEC  
**Protection rating:** IP 20  
**Supply lead:** 1800 mm  
**Plug connector:** LED mini  
**Connection to:** M1 plug connector, LED ballast

## Ice

WarmWhite  
34 149 01

### Accessories\*

LED ballast 6 W with flat Euro plug	30 226 02
M1 extension lead 1800 mm	36 768 01
M1 3-way distributor 180 mm	36 852 01
M1 6-way distributor 2000 mm	36 125 01

\* Further accessories in section Switch systems/Ballasts and leads

Dimensional drawing / installation

